

Make Your Home Escape Plan!

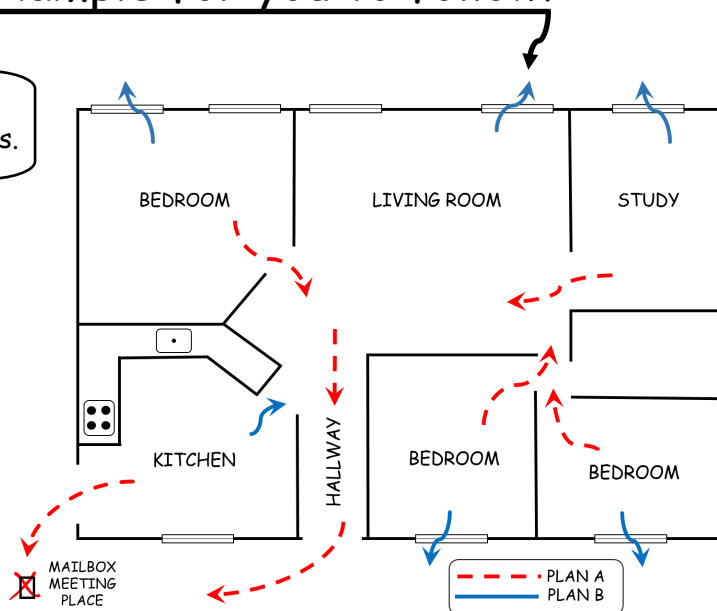
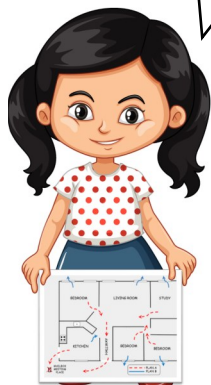
"KEEP THIS FORM AT HOME"

Dear Family,

Did you know you may only have three minutes or less to escape once a fire starts in your home? That's because fire is getting faster. That's also why it is so important to create and practice a fire escape plan. If there is a fire, you won't have time to plan a way out. Don't wait until it's too late. Plan ahead, and be sure your plan has two ways out of every room. Meet with everyone who lives in your home to discuss what to do in case of a fire. Draw your family escape plan.

- Draw a map of your home. Show all doors and windows.
- Make sure windows and doors open easily.
- Determine two ways out of every room.
- Designate an outside meeting place. It should be in the front of your home. You might use a tree or a mailbox.
- Review and practice your escape plan with your family.
- Make your own fire escape plan using the grid provided on the back of this sheet.
- Here is an example for you to follow!

Have a designated meeting spot outdoors.



Be sure to plan two ways out of every room.



Have Working Smoke Alarms - Close Before You Doze - Have An Escape Plan

Our Home Escape Plan - "KEEP AT HOME"

ADDRESS: _____

